



BW

BESPOKE

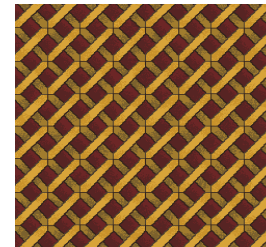
EXCLUSIVE FINE WOVEN AXMINSTER

BOND WORTH LIMITED
KIDDERMINSTER



Bond Worth Limited
Kidderminster

Our heritage spans 170 years of axminster carpet production.



- Market leaders with over 170 years of fine axminster weaving.
- Worlds largest gripper spool axminster manufacturer.
- Unlimited colour combinations with spool axminster.
- Unlimited scale on pattern repeats.
- From London to Las Vegas Casinos - no project too large or too small.



Design inspiration to loom to stunning installation.



With a weaving heritage over 170 years in the making, we have the expertise to produce the finest, most durable, bespoke carpet. Our carpets can be woven with no limit to colour combination, making anything possible. In addition our electronic jacquards are capable of weaving unlimited pattern repeats in a variety of widths. This is what makes BW Bespoke woven axminster truly unique. It is this expertise and variety that has made BW Bespoke carpets the axminster of choice for casinos in Las Vegas, palaces in Saudi Arabia; through to bars, restaurants and commercial installations across the world. Whatever your requirements may be, BW Bespoke can design and create a unique axminster carpet just for you.





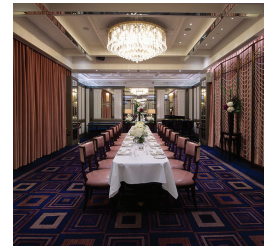
The Wellesley
London

London's most unique and luxurious boutique hotel on Hyde Park Corner.



The brief demanded that The Wellesley had flooring that complimented its rich historical legacy from the buildings Jazz heyday.

The designs reflect the elegance of the 1920's and 1930's at the height of the Jazz age. Art Deco influences abound throughout the installation.



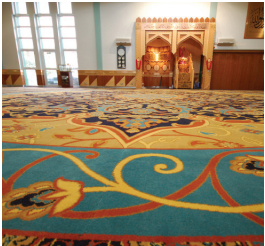
Islamic Centre
Manchester

Traditional design re-worked with a contemporary palette.



We took as inspiration the world famous Ardabil Carpet, now in London's Victoria & Albert Museum.

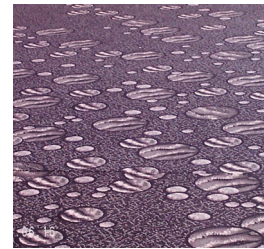
The result is a homage to possibly one of the greatest examples of the art of carpet making. The colours chosen reflect the rich islamic design that graces the dome of the hall.





Riverside Banqueting Centre
London

The demands and rigours of commercial hospitality often call for the superior quality of a traditional woven axminster.



The Riverside Banqueting Centre's commission saw our designers and weavers creating a durable carpet.

The design incorporates a planet theme and close work with an interior lighting specialist to create mood and atmosphere.

The result? A truly bespoke, quality Axminster.



MCC
London

The Marlyebone Cricket Club - famous the world over with centuries of history and tradition yet open to modern ideas and influences.



The carpet we created for the spiritual home of cricket was produced on our four-metre-wide looms – ideal for contract installations.

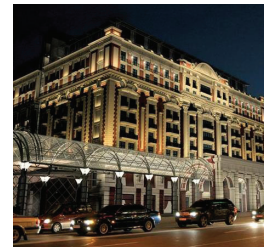
Woven at 10 row, it is as hard wearing as it is visually stunning.





Ritz Carlton Moscow

With an unbeatable reputation and central location close to the Kremlin and Red Square, The Ritz-Carlton is one of Moscow's most luxurious hotels.



Situated opposite the Kremlin the hotel is among the most luxurious and expensive travel destinations in the world.

The palatial 'Ritz-Carlton' suite is billed as the 12th most expensive hotel room in the world by Forbes Magazine.



The English Riviera Centre
Torquay

Bold colour, striking design all elements that shine through this stunning installation.



Paying tribute to the art deco style, this stylish axminster evokes the heyday of Great British seaside holidays of the 1930s.

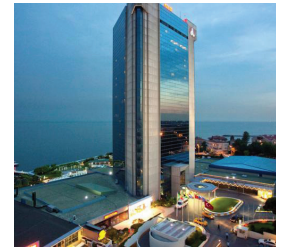
Hosting a wide range of events, from weddings right through to conferences and exhibitions, the English Riviera Centre has a versatile, durable carpet that also looks fabulous.





Polat Renaissance
Istanbul

Gracing the shores of the Marmara the classical interiors are the last word in luxury and elegance.



A fusion of contemporary and modern styles, the Renaissance Polat is a modern 21st century hotel. Whether they be on a business trip or on holiday, guests get to stay in luxury - thanks to our high quality, 11 row woven axminster.



Gurdwara
Gravesend

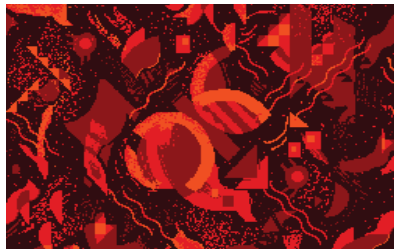
Marble, gold and exquisite carving stage an artisan backdrop to one the most stunning axminster designs we have ever produced.



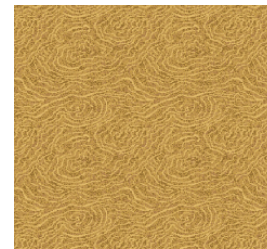
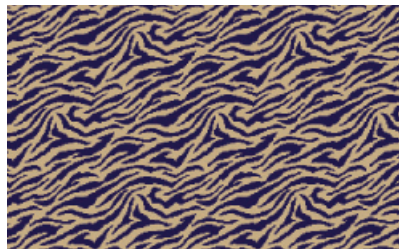
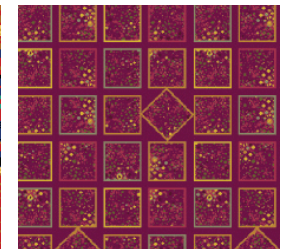
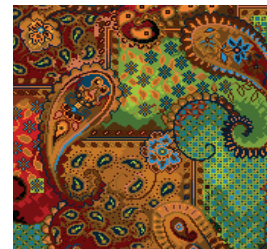
The Gravesend Gudwara complex is one of the largest outside India.

This award winning building has already become an international landmark. We are delighted to have paid our part in this building's success.

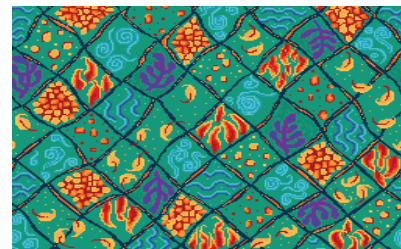
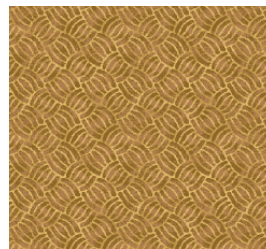
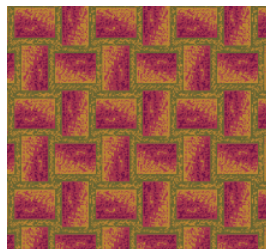
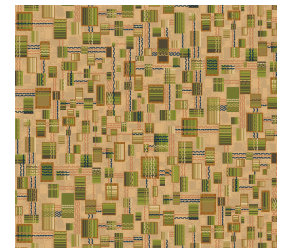
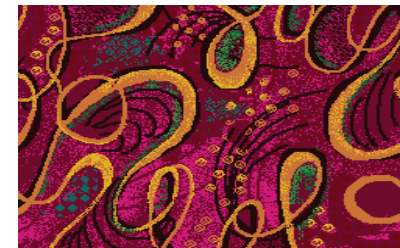
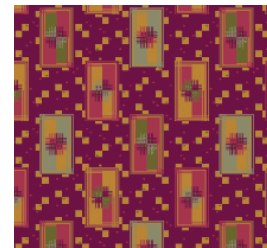
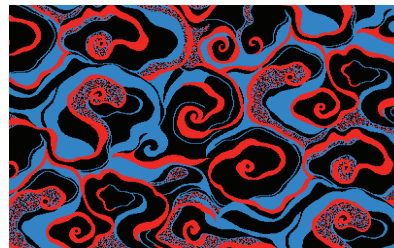
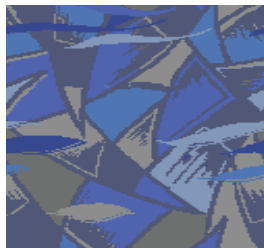
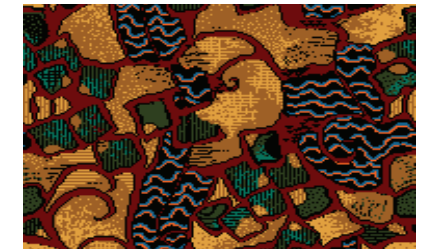




The choice can be overwhelming but our expert designers will interpret your brief and develop for you the client a unique creation.



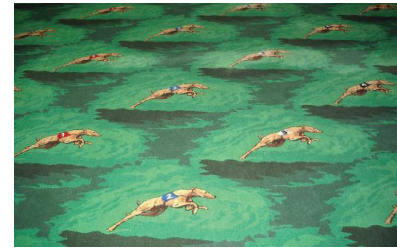
With over 170 years of design heritage to draw upon you can rest assured that we will guide you every step of the way from design brief to complete installation.



Be Creative

With unlimited colours true graduations of colour can be explored.





*“Moderation
is a **fatal** thing.*



*Nothing exceeds
like
excess!”*



Contact Details
BW Bespoke

Steve Cooper

Mobile : +44 (0) 7415 866 206

Email: steve.cooper@bondworth.co.uk

London :
11 Berkeley St
London
W1J 8DS

Kidderminster :
Townshend Works
Puxton Lane
Kidderminster
Worcestershire
DY11 5DF

Website: www.bondworth.co.uk





BW

BESPOKE

EXCLUSIVE FINE WOVEN AXMINSTER

TO DISCOVER MORE CLICK THE LINK BELOW

www.bondworth.co.uk